

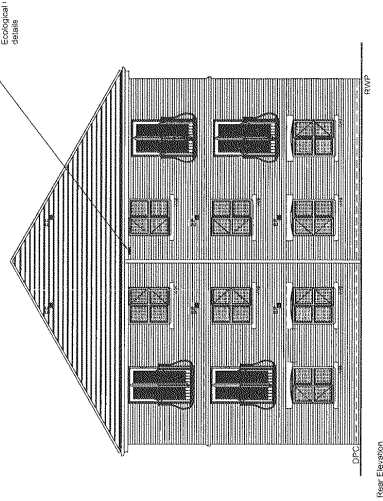
06/2783/FUL
Harpers Garden Centre, Junction Road, Norton
Revised application for residential development comprising 46 no. dwelling houses and 36
no. apartments together with associated means of access and landscaping.

Appendix ref. 1
Site Layout Plan

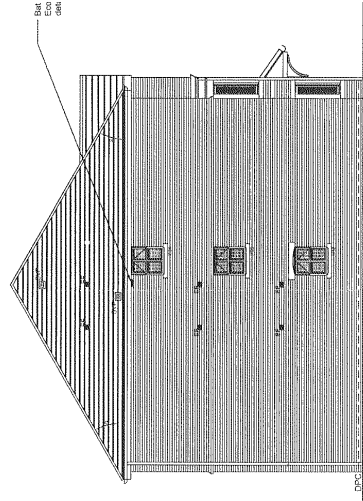


06/2783/FUL
 Harpers Garden Centre, Junction Road, Norton
 Revised application for residential development comprising 46 no. dwelling houses and 36
 no. apartments together with associated means of access and landscaping.

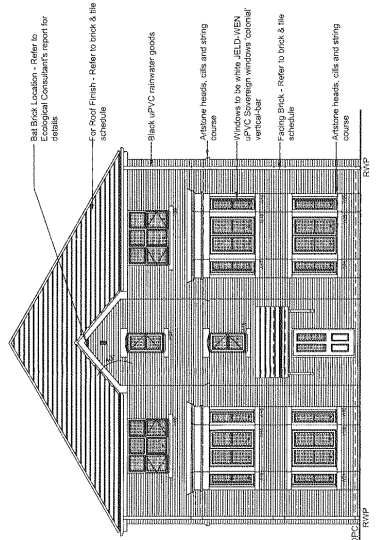
Appendix ref. 3
 Apartment C elevations



Rear Elevation

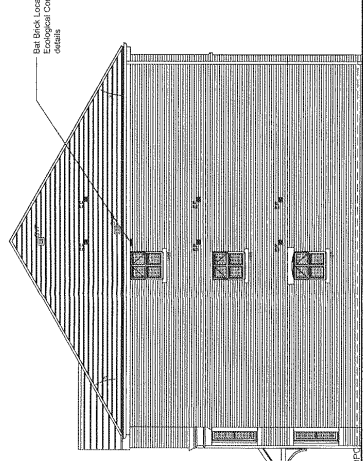


Side Elevation



Front Elevation

- KEY
- EXTRACT PAH
 - ▣ TILE VENT FOR SWP
 - ∞ OBRUDED GLASS
 - SAFETY GLAZING



Side Elevation

L I S I A B L E S

q ft
 NCIES TO
 SERVED

06/2783/FUL
Harpers Garden Centre, Junction Road, Norton
Revised application for residential development comprising 46 no. dwelling houses and 36
no. apartments together with associated means of access and landscaping.

Appendix ref. 4
Example of House Types

FRONT ELEVATION.

L. H. SIDE ELEVATION.

REAR ELEVATION.

FIRST FLOOR PLAN.

Architectural drawings for House Type 1. The front elevation shows a two-story house with a gabled roof, a central entrance, and a garage. The L.H. side elevation shows a gabled roof with a chimney. The rear elevation shows a two-story house with a gabled roof and a chimney. The first floor plan shows a living room, kitchen, dining room, garage, hall, and stairs. The second floor plan shows three bedrooms, a bathroom, and a linen suite.

STOCKTON BOROUGH COUNCIL
 PLANNING
 - 5 SEP 2006
 DATE RECEIVED

FRONT ELEVATION.

L. H. SIDE ELEVATION.

REAR ELEVATION.

FIRST FLOOR PLAN.

Architectural drawings for House Type 2. The front elevation shows a two-story house with a gabled roof, a central entrance, and a garage. The L.H. side elevation shows a gabled roof with a chimney. The rear elevation shows a two-story house with a gabled roof and a chimney. The first floor plan shows a lounge, dining, kitchen, garage, hall, and stairs. The second floor plan shows three bedrooms, a bathroom, and a linen suite.

STOCKTON BOROUGH COUNCIL
 PLANNING
 - 5 SEP 2006
 DATE RECEIVED

miller homes Scale: 1:100 Title: STANDARD HOUSE TYPE